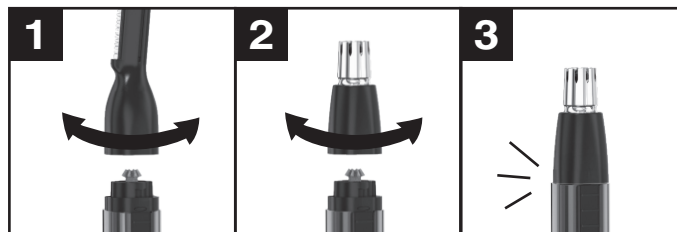
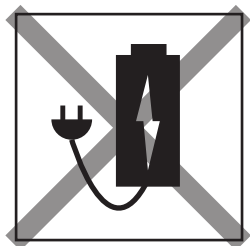
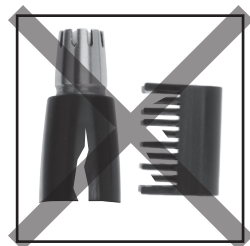


**5640 & 5662 BATTERY
PRODUCT GUIDE**

part no: 1003243



WAHL CLIPPER CORPORATION
World Headquarters
P.O. Box 578, Sterling, IL 61081

Wahl (UK) Limited
Sterling House, Clipper Close
Ramsgate, Kent CT12 5GG

Wahl Hungária Kft
H-9200 Mosonmagyaróvár
Barátság u.6.
Hungary

Wahl International Consumer Group B.V.
Engelenburgstraat 36
7391 AM Twello,
The Netherlands

Wahl Spain
Fernando Giner de los Ríos 12
46910 Sedavi
Valencia, Spain

Wahl France SAS
1c rue Foch
67450 Mundolsheim
France

WAHL Italia s.r.l.
Via Gobetti 52 - 1° piano
I-40129 Bologna (BO)
Italia

Представительство в РФ и РБ:
ООО УОЛЛ Рус
Ракетный бульвар, д. 16
129164 Москва / Russia (Россия)

Wahl India Grooming Products Pvt Ltd.
B-1002, 10TH Floor, B-Wing, Lotus Corporate Park,
Off Jay Coach Flyover,
Western Express Highway,
Goregaon-East, Mumbai 400-063

Wahl Japan
K Building 8F
1-32-11 Yoyogi,
Shibuya-Ku, Tokyo 151-0053, Japan

Wahl Australia PTY LTD
PO Box 456
Acacia Ridge QLD 4110,
Australia

Wahl NZ Limited
PO Box 38 323
Wellington Mail Centre
Lower Hutt 5045, New Zealand

Wahl Clipper Brasil
Rodovia Geraldo Scavone,
2300 UC 45 - Pedregulho.
Jacarei - SP. CEP: 12305-490

Wahl Argentina
Av. Alvarez Jonte 5655
Buenos Aires (C1407GPK), Argentina

WAHL MEA FZCO
Dubai Airport Free Zone
P.O Box 371395, Dubai UAE

Wahl Clipper (Pty) Ltd
PO Box 2916 Bedfordview,
Gauteng 2007 South Africa

© 2020
Wahl® is a registered trademark
of Wahl Clipper Corporation
Revision 6/20 V1
www.wahl-consumer.com

